

ACHIEVING JUDGING COMPETENCY



Jean Allen-Ikeson
National Judges Education Coordinator

COMPETENCY. . .

*An important skill that
is needed to do a job*

Goals for Judges' Training



G. Allikas

- **Participate**
- **Research**
- **Analysis**
- **Judgment/
conclusions**
- **Communication**
- **Teamwork**
- **Leadership**

Study



Kuligowski

Students

First Year

RULES

The Handbook

including:

- Attendance requirements
- Limits to time served as students/associates
- Ethics
- Conduct

Mechanics of Judging

- Quality, Cultural, Botanical, Exhibit & Other Awards
- Judging Criteria
- The Score Card
- Ribbon Judging vs AOS Judging

	7.2.1	7.2.2	7.2.3	7.2.4	7.2.5	7.2.6	7.2.7	7.2.8	7.2.9	7.2.10
	General	Cattleya	Cymbidium	Dendrobium	Miltonia (Miltoniopsis)	Odontoglossum	Paphiopedilum	Phalaenopsis	Pleurothallid	Vanda
FLOWER FORM										
General Form	-	15	15	15	15	15	20	15	20	15
Sepals (*Dorsal Sepal)	-	5	5	5	6	5	10	5	4*	7
Petals (*Lateral Sepals)	-	5	5	5	-	5	5	6	8*	5
Labelium (*Pouch)	-	5	5	5	9	5	5*	4	-	3
Caudae	-	-	-	-	-	-	-	-	3	-
TOTAL	30	30	30	30	30	30	40	30	35	30
COLOR OF FLOWER										
General Color	-	15	15	15	15	15	20	15	20	15
Sepals (*Dorsal Sepal)	-	7	8	5	6	5	10	10	5*	7
Petals (*Lateral Sepals)	-	-	5	5	-	5	5	10*	-	5
Labelium (*Pouch)	-	8	7	5	9	5	5*	5	-	3
TOTAL	30	30	30	30	30	30	40	30	35	30
OTHER CHARACTERISTICS										
Size of Flower	10	10	10	10	10	10	10	10	10	10
Substance and Texture	10	20	10	10	10	10	5	10	7	10
Habit and Arrangement of Inflorescence(s)	10	-	10	10	10	10	-	10	5	10
Floriferousness	10	-	10	10	10	10	-	10	8	10
Floriferousness and Stem	-	10	-	-	-	-	-	-	-	-
Stem	-	-	-	-	-	-	5	-	-	-
TOTAL	40	40	40	40	40	40	20	40	30	40

Students

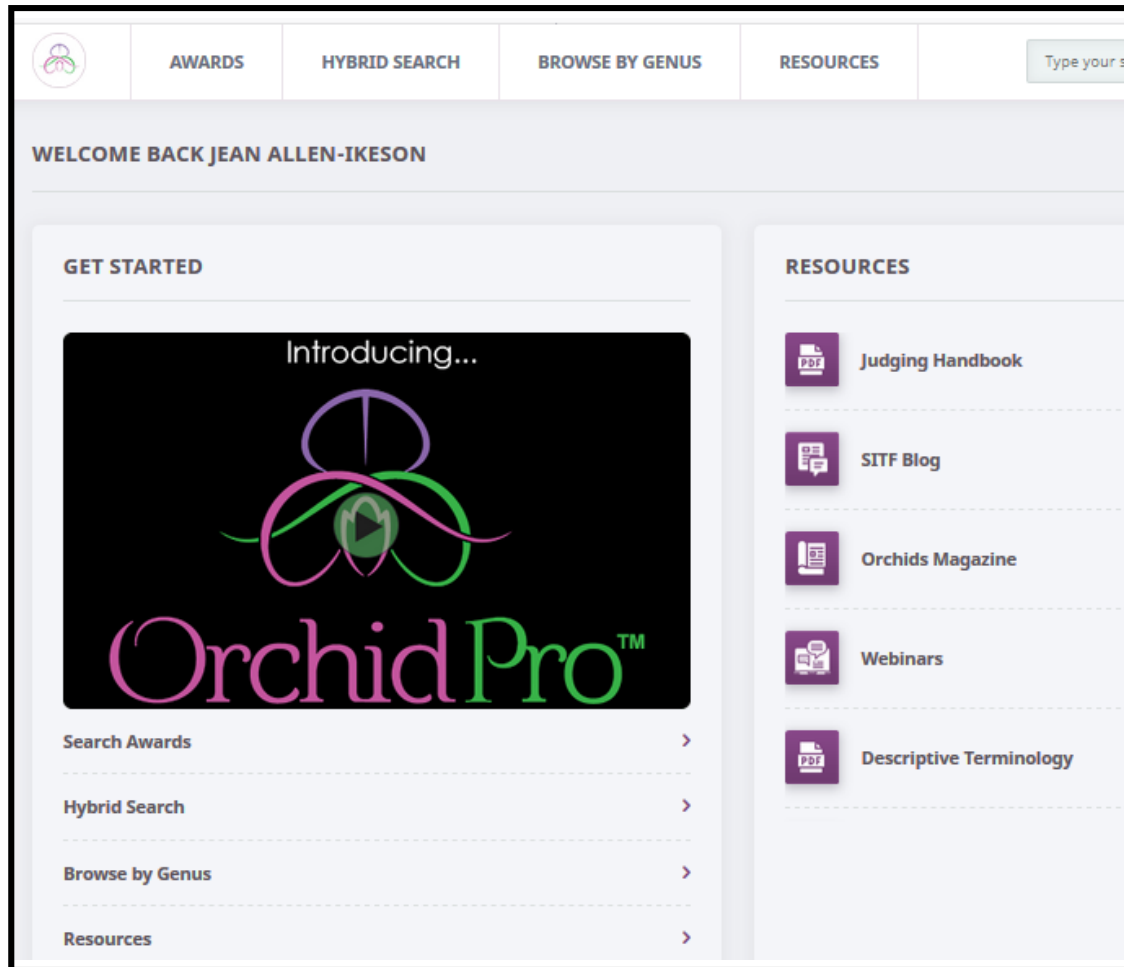
First Year

Judging Teams

- How to evaluate & comment on an orchid
- Who can nominate?
- Whose score counts?



G. Allikas



***Research a species/grex, parents,
previous awards, its hybrids***

Students

First Year

Thirty-one flowers and nine buds on 40 inflorescences to 4 cm. . . .



M. Rollinger

Restrepia cymbula 'Reagan' CBR/AOS

Award Descriptions

- Proper Order
- Form
- Color
- Surface Location (apex, distal, proximal, inferior, superior, etc.)
- Substance/texture
- Plant Description (CBR, CHM, CCM, CCE)
- SITF

First Year

Students



Measurement
Size Counts!

Tom Kuligowski

Basic Concepts

- What makes a good flower
- Wow factor
- Genus, species, grex, clone/cultivar

Paphiopedilum
Prince Edward of York
'Lady Harriet' AM/AOS



Form: judging & description



- Flower/plant parts
 - Size
- Floriferousness
 - Arrangement
 - Stem

Cattleya elongate f. *alba*
'Gabriel Amaru' FCC/AOS

G. Barfield

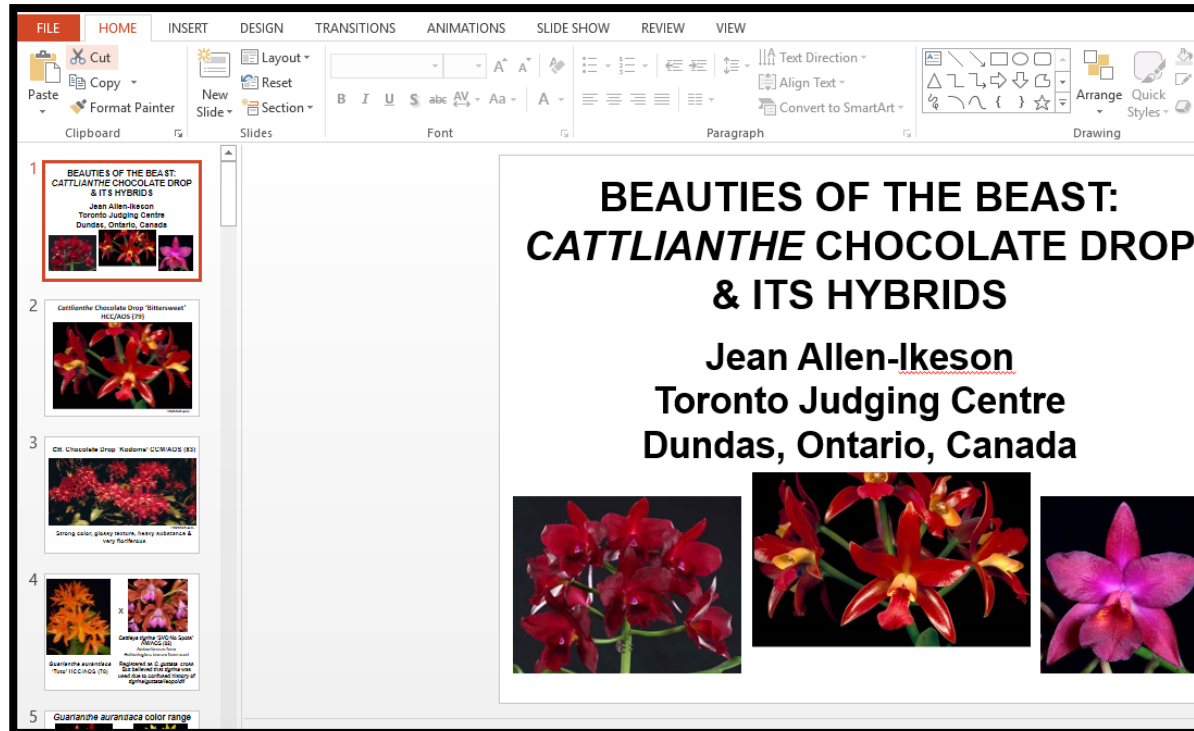
Color: judging & description

- Substance & Texture



Paph. Gloria Naugle
'Krull's Sparkling
Gloria' AM/AOS

W. Newton



Create a PowerPoint Presentation

**Good first talk: recent awards to a group
w/value added on species/grex
comparison, parents, trends**

First Year

Students

Things to do

- Attend as many shows & monthly judgings as possible
- Practice OrchidPro research
- Complete homework
- Listen to at least four-six AOS webinars
- Attend an out-of-region judging/seminar
- Deliver a PowerPoint presentation



R. Noel

Exhibits

- **Design**
- **Exhibit awards**
- **Judging exhibits**
- **Exhibit descriptions**



G. Allikas

- Role of ribbon judging captain; instructions to a ribbon judging team
- Be able to rapidly research a plant and make suggestions for suitability for an award
- Write SITF form with confidence
- Measurement/description of more difficult genera: *Stanhopea*, *Mormodes*, etc.

Stanhopea jenischiana
'Stephanie's Baxter' AM/AOS



Nomenclature



- **World Checklist of Selected Plant Families**



- **RHS Orchid Register**
- **Accepted species & varieties; synonyms; horticultural varieties**



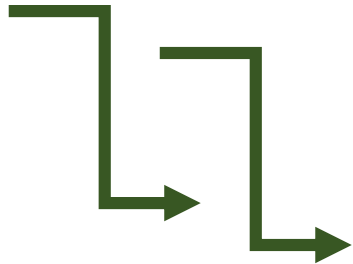
- **Genus, species, grex, epithet, variety, forma, dates after names, clone/cultivar**

Taxonomy

- The term DNA Sequencing
 - The term clade
- Basis for current classification into species/genera
- How changes affect judging for
 - Ribbon Judging
 - AOS Judging

You Say Laelia...

I Say *Cattleya*



You say *Odontoglossum...*

I say *Oncidium*

Ploidy & Judging

**Terms: aneuploid, diploid, triploid,
tetraploid, polyploid,
chromosome count, crippling**

Effect on judging flowers

How to recognize a tetraploid?

Just looking at it??

Chromosome count

Major Genera Homework/Presentations

- *Phalaenopsis*
- *Cattleya* alliance
- Paphs, Phrags, Cyps
- *Oncidiinae*
- *Vanda* alliance
- *Dendrobium*
- *Bulbophyllum*
- *Cymbidium*
- *Catasetinae*
- Pleurothallids/Masd.
- Miscellaneous genera



Things to do

- Analytical PowerPoint presentations, breeding trends, future trends: 1/year
- Attend out-of-region conferences/*take notes*
- Hopefully attend an AOS Members Meeting
- Demonstrate via presentations & homework 4 steps in judging: research, analysis, judgment & communication

Late 3rd Year

AOS Judging Team Leader (for the future)

- **How to conduct**
- **Effective leadership**
- **Responsibility for accurate descriptions**

Tom Kuligowski



Continued study in

- Species and hybrids
- Refine team leader skills for ribbon & AOS judging
- Scores should rarely be out of range



Ikeson

Things to do

- Advanced, in-depth PROJECT to demonstrate competency in research, analysis, judgment, conclusions, communication
- Understudy judging chair at more than one show (provide instructions to judges, assist in making up teams & how to balance them, & *Review Descriptions!*)
- *Almost finished!!*



Role of Judging Centers

- *Implementation*
 - *Guidance*
- *Encouragement*
- *Evaluation*
- *Communication*

Lifelong for ALL Judges:

★ Read ★ Research ★ Attend
★ Present talks ★ Share ★ Travel

